

Measure 4 **Age of Active Pending Caseloads**

ALL JUDGES (12/31/2017)

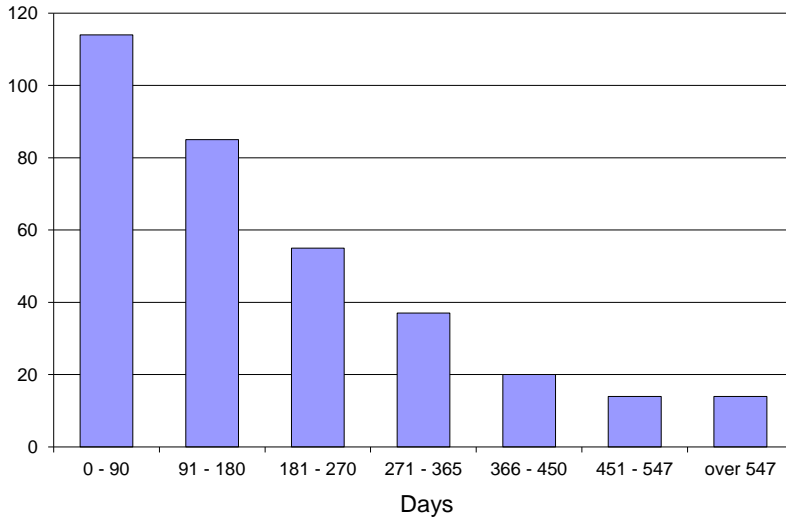


CourTools

A - Marriage Terminations with Children

Age (Days)	Number of Cases	Percent	Cumulative Percent
0 - 90	114	34%	34%
91 - 180	85	25%	59%
181 - 270	55	16%	75%
271 - 365	37	11%	86%
366 - 450	20	6%	92%
451 - 547	14	4%	96%
over 547	14	4%	100%

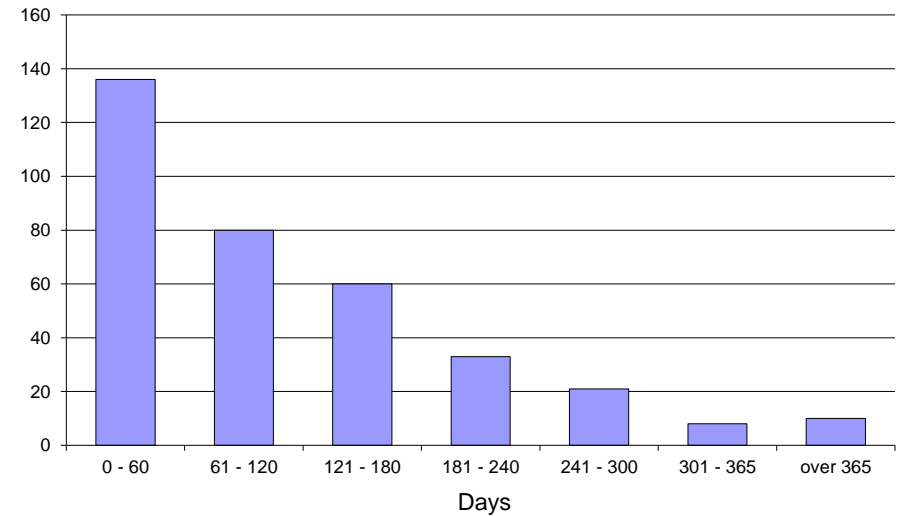
Total 339



B - Marriage Terminations without Children

Age (Days)	Number of Cases	Percent	Cumulative Percent
0 - 60	136	39%	39%
61 - 120	80	23%	62%
121 - 180	60	17%	79%
181 - 240	33	9%	89%
241 - 300	21	6%	95%
301 - 365	8	2%	97%
over 365	10	3%	100%

Total 348



Measure 4 **Age of Active Pending Caseloads**

ALL JUDGES (12/31/2017)

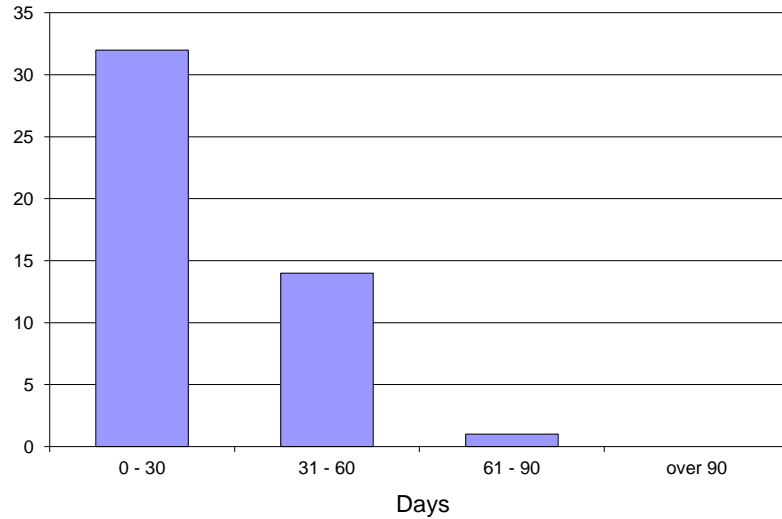


CourTools

C - Marriage Dissolutions with Children

Age (Days)	Number of Cases	Percent	Cumulative Percent
0 - 30	32	68%	68%
31 - 60	14	30%	98%
61 - 90	1	2%	100%
over 90	0	0%	100%

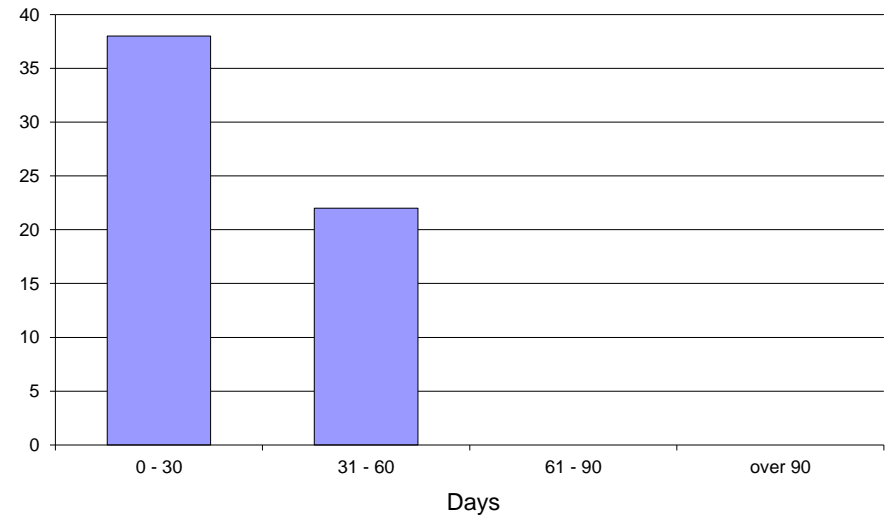
Total 47



D - Marriage Dissolutions without Children

Age (Days)	Number of Cases	Percent	Cumulative Percent
0 - 30	38	63%	63%
31 - 60	22	37%	100%
61 - 90	0	0%	100%
over 90	0	0%	100%

Total 60



Measure 4 **Age of Active Pending Caseloads**

ALL JUDGES (12/31/2017)

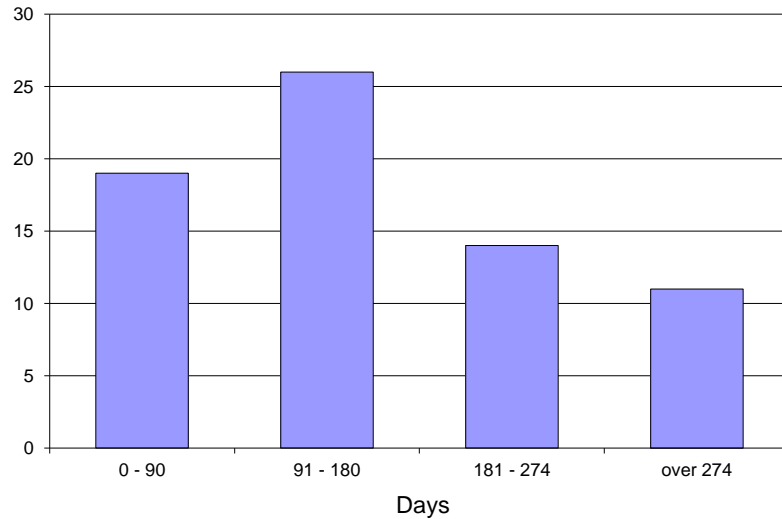


CourTools

E - Change of Custody

Age (Days)	Number of Cases	Percent	Cumulative Percent
0 - 90	19	27%	27%
91 - 180	26	37%	64%
181 - 274	14	20%	84%
over 274	11	16%	100%

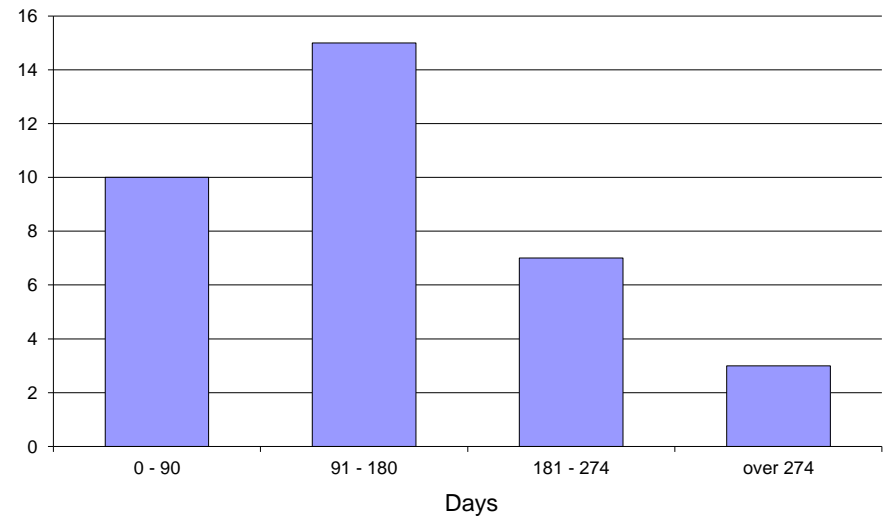
Total 70



F - Visitation Enforcement or Modification

Age (Days)	Number of Cases	Percent	Cumulative Percent
0 - 90	10	29%	29%
91 - 180	15	43%	71%
181 - 274	7	20%	91%
over 274	3	9%	100%

Total 35



Measure 4 **Age of Active Pending Caseloads**

ALL JUDGES (12/31/2017)

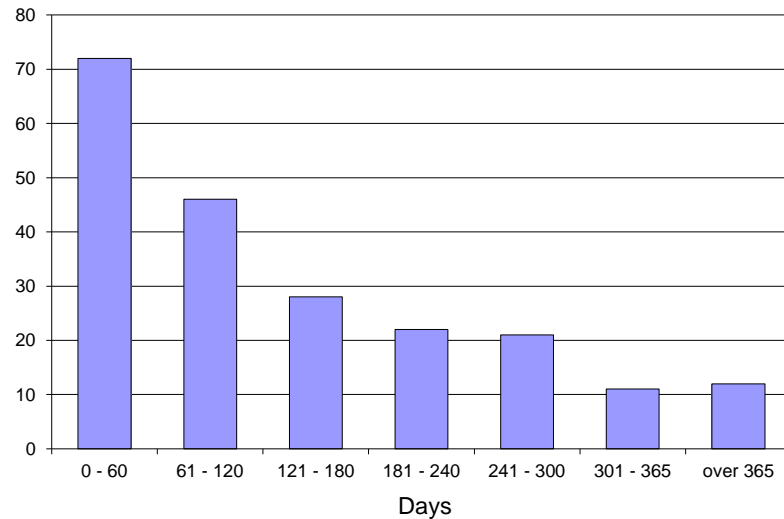


CourTools

G - Support Enforcement or Modification

Age (Days)	Number of Cases	Percent	Cumulative Percent
0 - 60	72	34%	34%
61 - 120	46	22%	56%
121 - 180	28	13%	69%
181 - 240	22	10%	79%
241 - 300	21	10%	89%
301 - 365	11	5%	94%
over 365	12	6%	100%

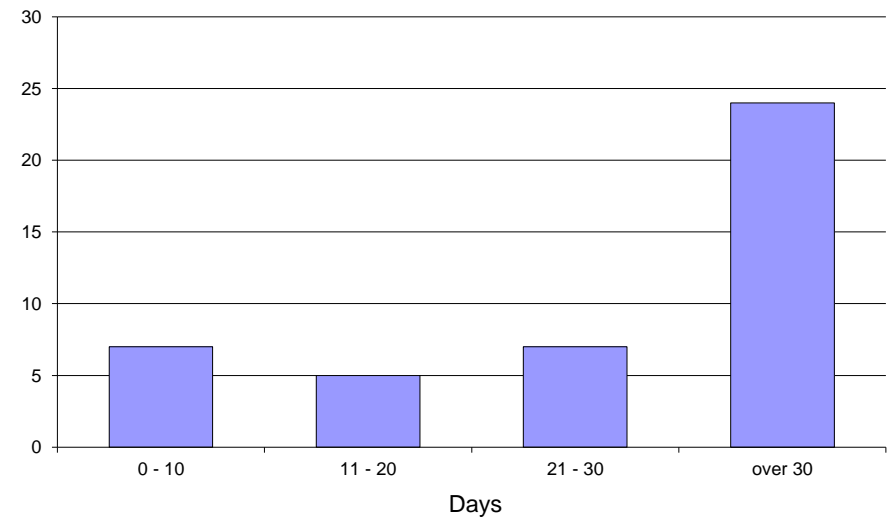
Total 212



H - Domestic Violence

Age (Days)	Number of Cases	Percent	Cumulative Percent
0 - 10	7	16%	16%
11 - 20	5	12%	28%
21 - 30	7	16%	44%
over 30	24	56%	100%

Total 43



Measure 4 **Age of Active Pending Caseloads**

ALL JUDGES (12/31/2017)

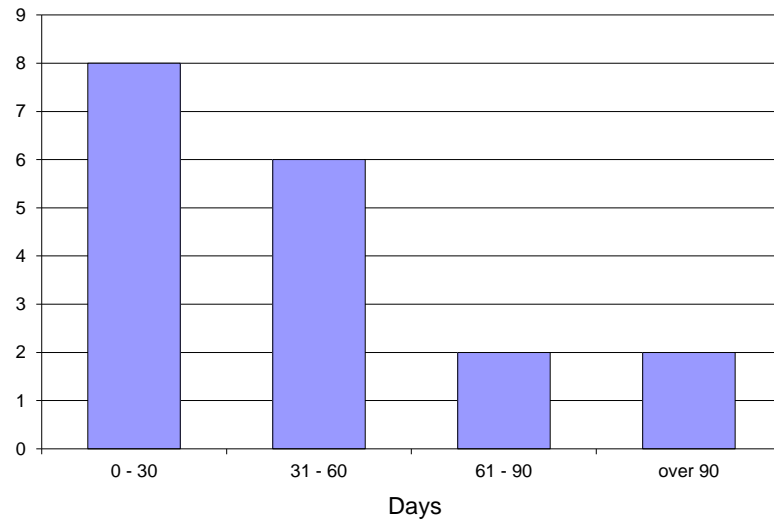


CourTools

I - URESA

Age (Days)	Number of Cases	Percent	Cumulative Percent
0 - 30	8	44%	44%
31 - 60	6	33%	78%
61 - 90	2	11%	89%
over 90	2	11%	100%

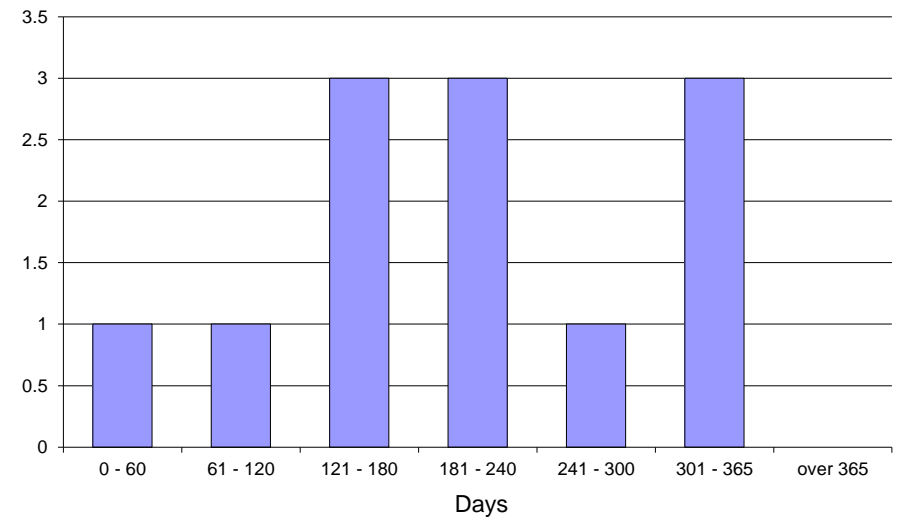
Total 18



J - Parentage

Age (Days)	Number of Cases	Percent	Cumulative Percent
0 - 60	1	8%	8%
61 - 120	1	8%	17%
121 - 180	3	25%	42%
181 - 240	3	25%	67%
241 - 300	1	8%	75%
301 - 365	3	25%	100%
over 365	0	0%	100%

Total 12



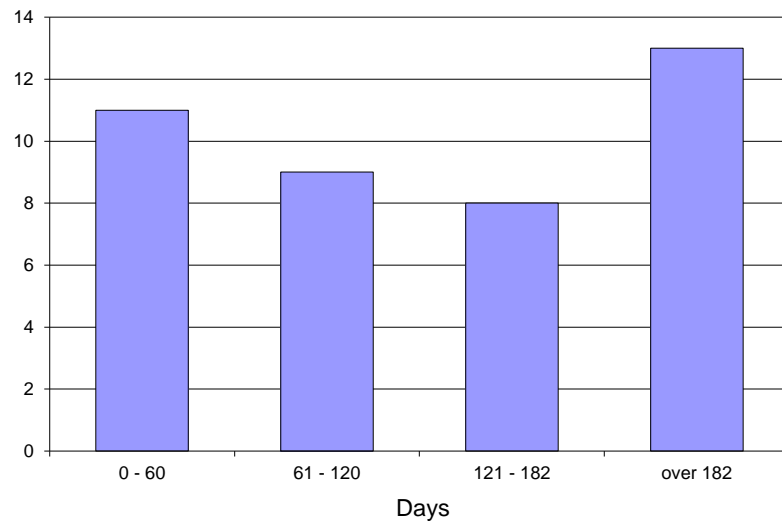
Measure 4 **Age of Active Pending Caseloads**

ALL JUDGES (12/31/2017)

K - All Others

Age (Days)	Number of Cases	Percent	Cumulative Percent
0 - 60	11	27%	27%
61 - 120	9	22%	49%
121 - 182	8	20%	68%
over 182	13	32%	100%

Total 41



CourTools