

Measure 4 **Age of Active Pending Caseloads**

ALL JUDGES (APRIL 2017)

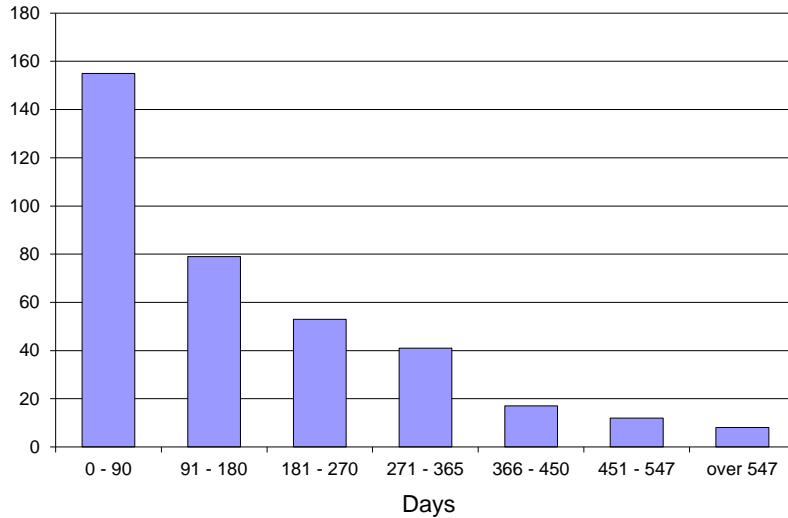


CourTools

A - Marriage Terminations with Children

Age (Days)	Number of Cases	Percent	Cumulative Percent
0 - 90	155	42%	42%
91 - 180	79	22%	64%
181 - 270	53	15%	79%
271 - 365	41	11%	90%
366 - 450	17	5%	95%
451 - 547	12	3%	98%
over 547	8	2%	100%

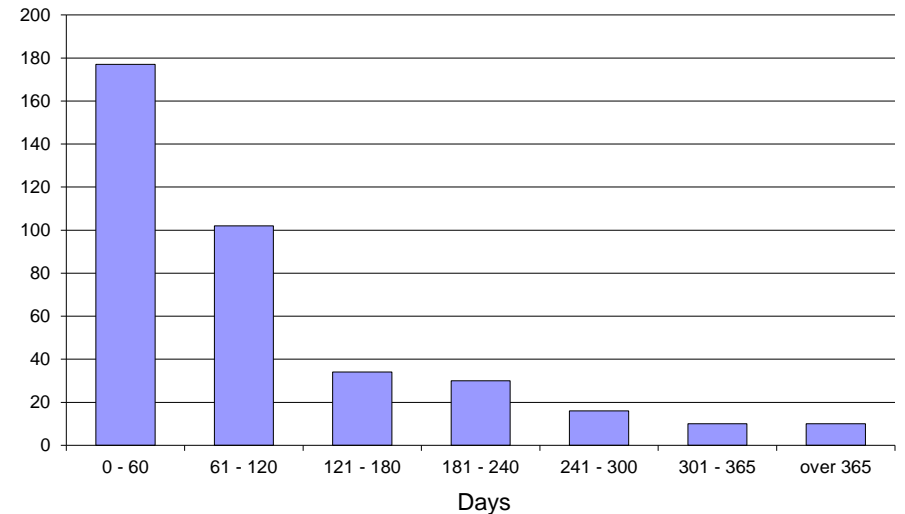
Total 365



B - Marriage Terminations without Children

Age (Days)	Number of Cases	Percent	Cumulative Percent
0 - 60	177	47%	47%
61 - 120	102	27%	74%
121 - 180	34	9%	83%
181 - 240	30	8%	91%
241 - 300	16	4%	95%
301 - 365	10	3%	97%
over 365	10	3%	100%

Total 379



Measure 4 **Age of Active Pending Caseloads**

ALL JUDGES (APRIL 2017)

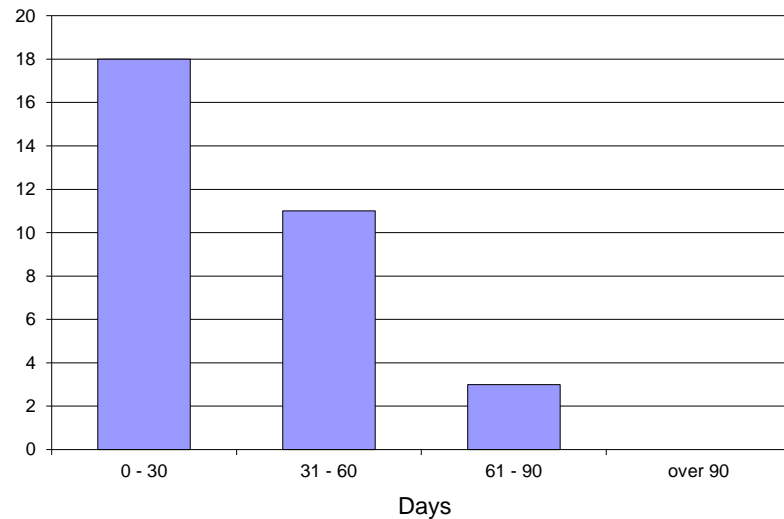


CourTools

C - Marriage Dissolutions with Children

Age (Days)	Number of Cases	Percent	Cumulative Percent
0 - 30	18	56%	56%
31 - 60	11	34%	91%
61 - 90	3	9%	100%
over 90	0	0%	100%

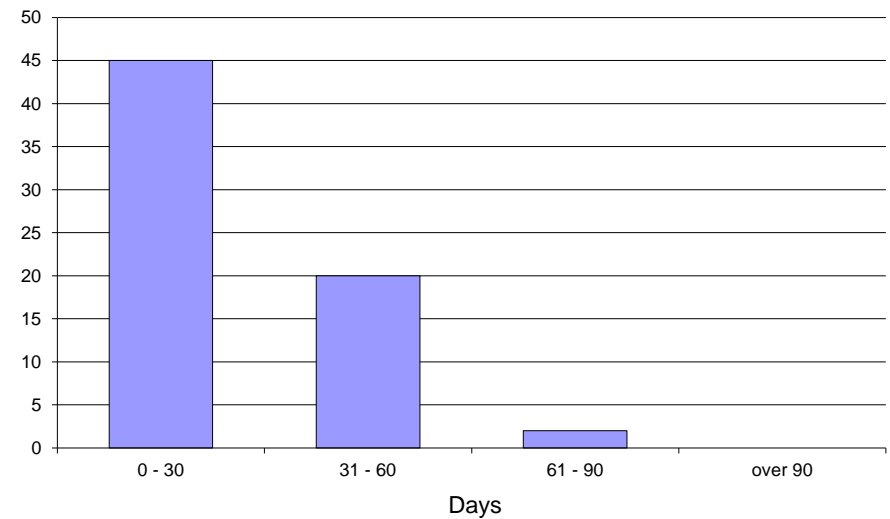
Total 32



D - Marriage Dissolutions without Children

Age (Days)	Number of Cases	Percent	Cumulative Percent
0 - 30	45	67%	67%
31 - 60	20	30%	97%
61 - 90	2	3%	100%
over 90	0	0%	100%

Total 67



Measure 4 **Age of Active Pending Caseloads**

ALL JUDGES (APRIL 2017)

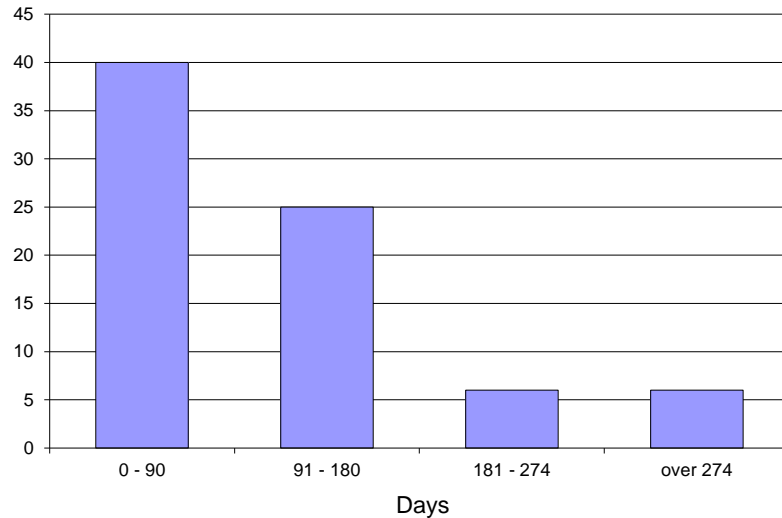


CourTools

E - Change of Custody

Age (Days)	Number of Cases	Percent	Cumulative Percent
0 - 90	40	52%	52%
91 - 180	25	32%	84%
181 - 274	6	8%	92%
over 274	6	8%	100%

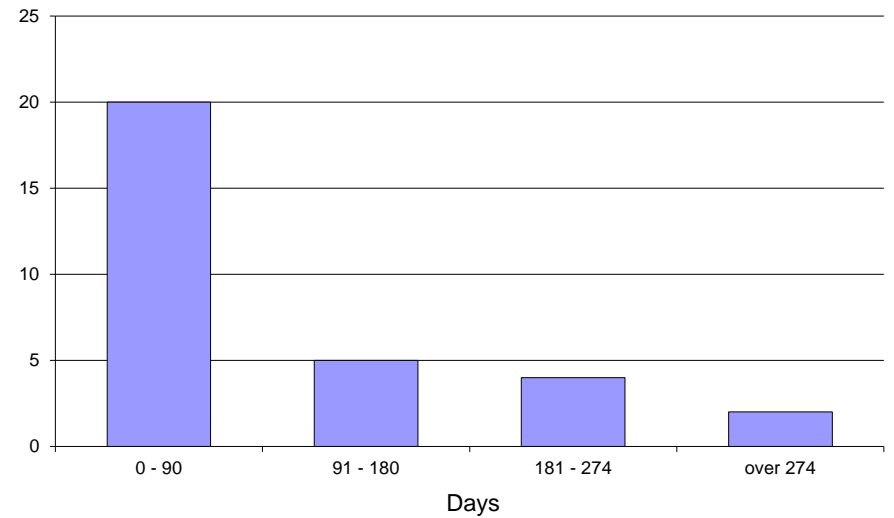
Total 77



F - Visitation Enforcement or Modification

Age (Days)	Number of Cases	Percent	Cumulative Percent
0 - 90	20	65%	65%
91 - 180	5	16%	81%
181 - 274	4	13%	94%
over 274	2	6%	100%

Total 31



Measure 4 **Age of Active Pending Caseloads**

ALL JUDGES (APRIL 2017)

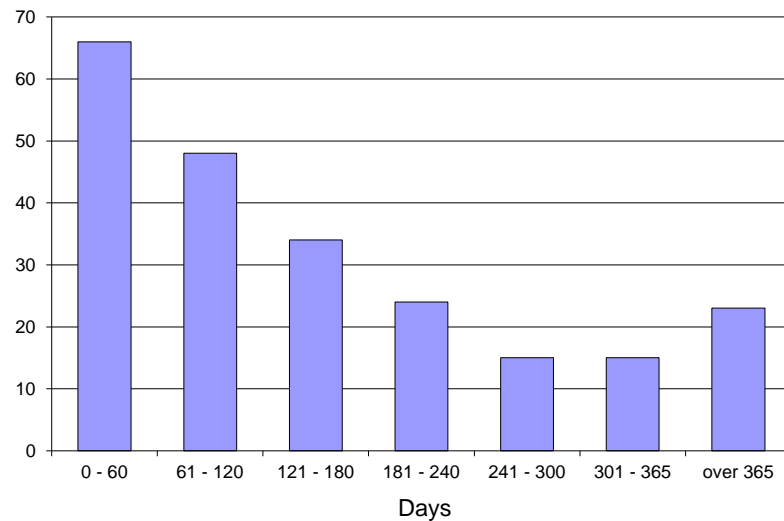


CourTools

G - Support Enforcement or Modification

Age (Days)	Number of Cases	Percent	Cumulative Percent
0 - 60	66	29%	29%
61 - 120	48	21%	51%
121 - 180	34	15%	66%
181 - 240	24	11%	76%
241 - 300	15	7%	83%
301 - 365	15	7%	90%
over 365	23	10%	100%

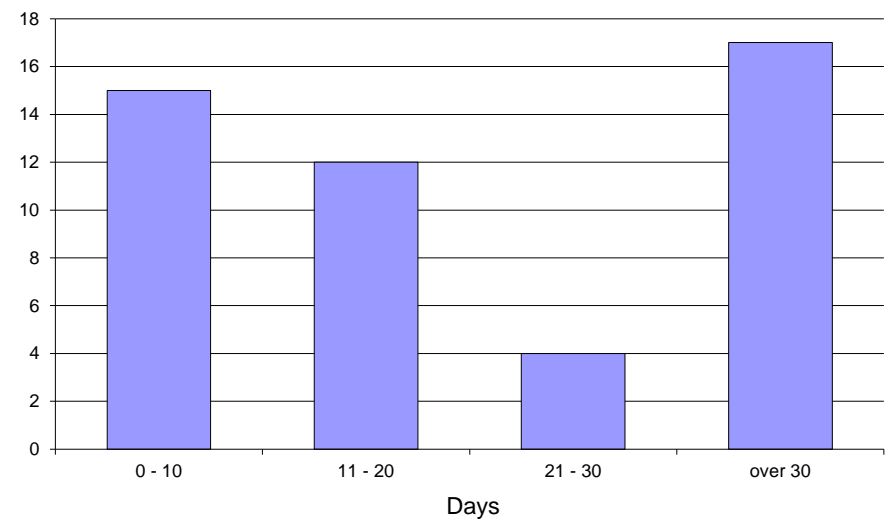
Total 225



H - Domestic Violence

Age (Days)	Number of Cases	Percent	Cumulative Percent
0 - 10	15	31%	31%
11 - 20	12	25%	56%
21 - 30	4	8%	65%
over 30	17	35%	100%

Total 48



Measure 4 **Age of Active Pending Caseloads** ALL JUDGES (APRIL 2017)

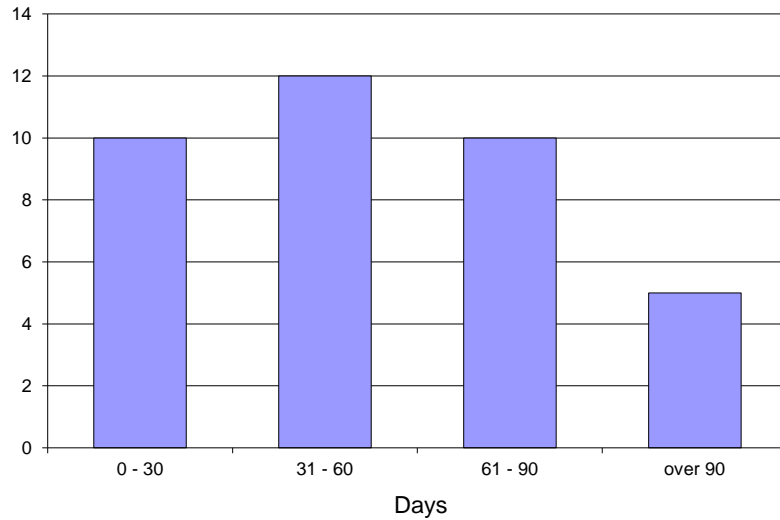


CourTools

I - URESA

Age (Days)	Number of Cases	Percent	Cumulative Percent
0 - 30	10	27%	27%
31 - 60	12	32%	59%
61 - 90	10	27%	86%
over 90	5	14%	100%

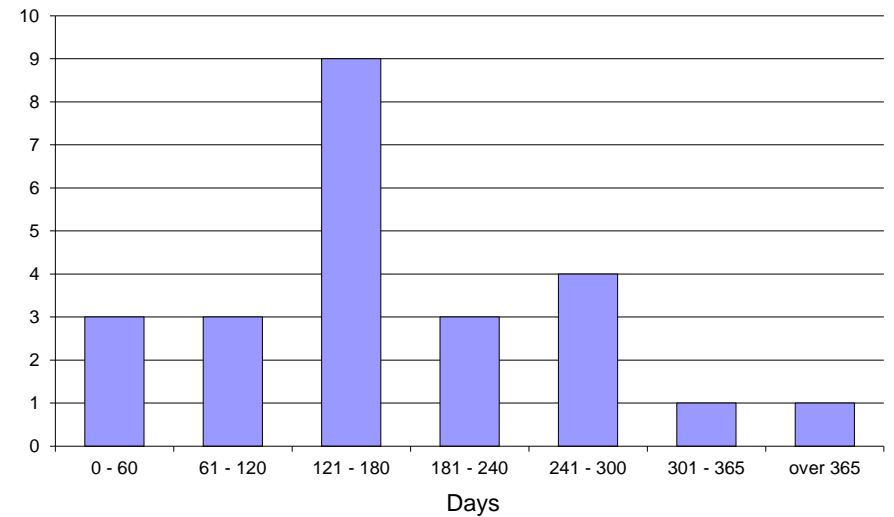
Total 37



J - Parentage

Age (Days)	Number of Cases	Percent	Cumulative Percent
0 - 60	3	13%	13%
61 - 120	3	13%	25%
121 - 180	9	38%	63%
181 - 240	3	13%	75%
241 - 300	4	17%	92%
301 - 365	1	4%	96%
over 365	1	4%	100%

Total 24



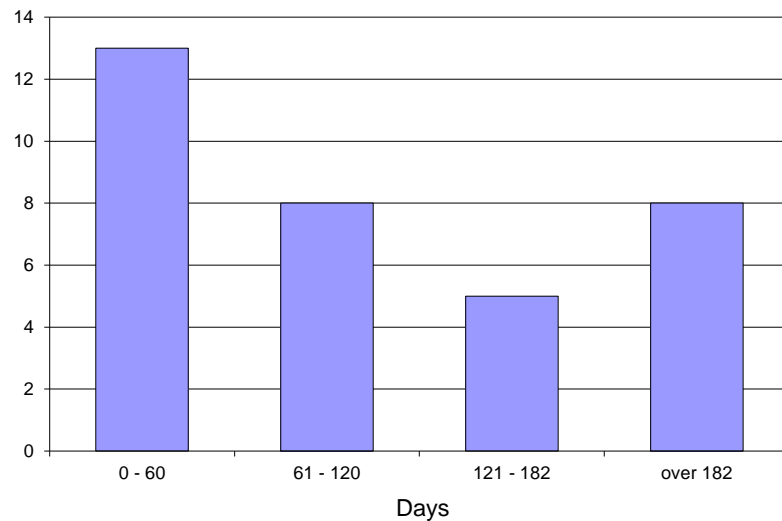
Measure 4 **Age of Active Pending Caseloads**

ALL JUDGES (APRIL 2017)

K - All Others

Age (Days)	Number of Cases	Percent	Cumulative Percent
0 - 60	13	38%	38%
61 - 120	8	24%	62%
121 - 182	5	15%	76%
over 182	8	24%	100%

Total 34



CourTools