

Measure 4 **Age of Active Pending Caseloads**

**ALL JUDGES (12/31/2019)**

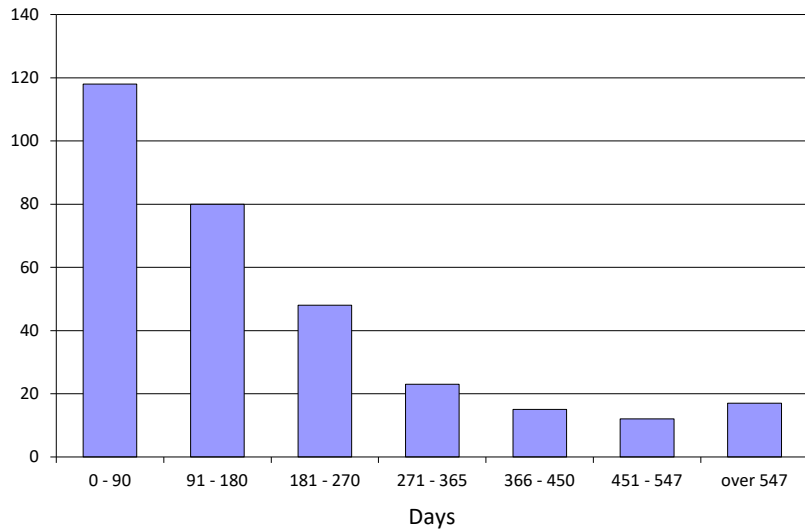


CourTools

**A - Marriage Terminations with Children**

Age (Days)	Number of Cases	Percent	Cumulative Percent
0 - 90	118	38%	38%
91 - 180	80	26%	63%
181 - 270	48	15%	79%
271 - 365	23	7%	86%
366 - 450	15	5%	91%
451 - 547	12	4%	95%
over 547	17	5%	100%

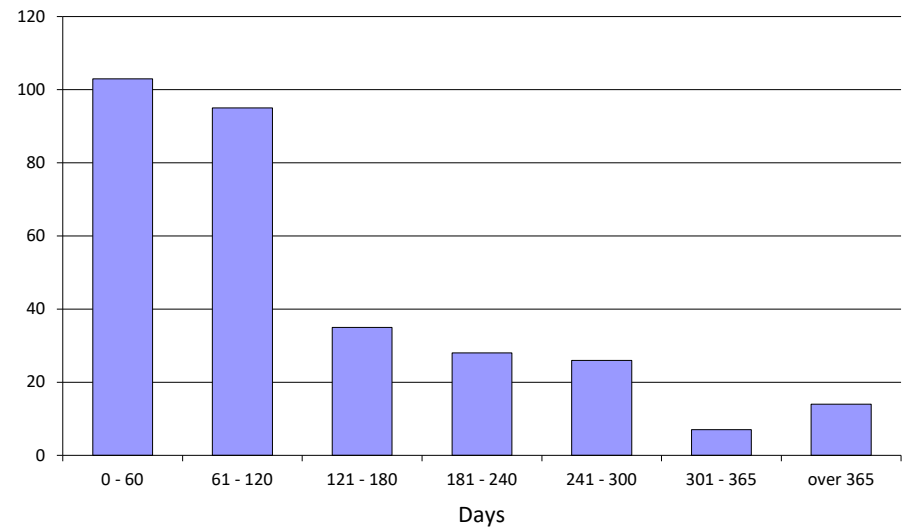
**Total 313**



**B - Marriage Terminations without Children**

Age (Days)	Number of Cases	Percent	Cumulative Percent
0 - 60	103	33%	33%
61 - 120	95	31%	64%
121 - 180	35	11%	76%
181 - 240	28	9%	85%
241 - 300	26	8%	93%
301 - 365	7	2%	95%
over 365	14	5%	100%

**Total 308**



Measure 4 **Age of Active Pending Caseloads**

**ALL JUDGES (12/31/2019)**

Measure 4 **Age of Active Pending Caseloads**

**ALL JUDGES (12/31/2019)**

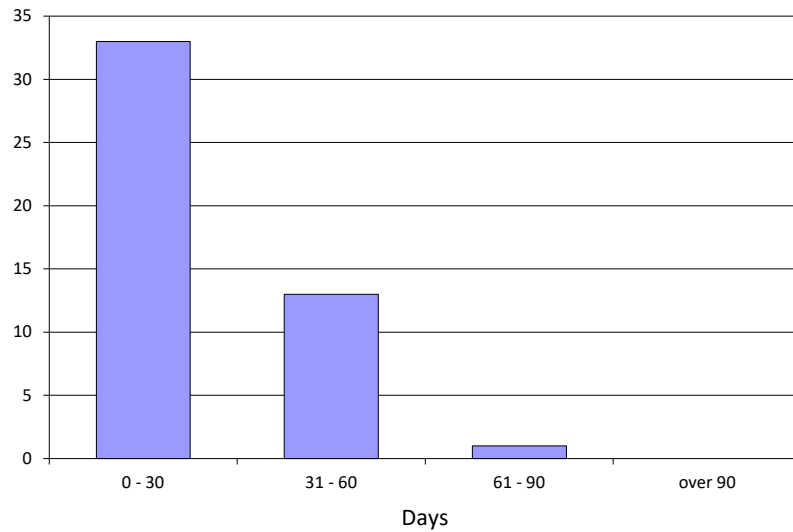


CourTools

**C - Marriage Dissolutions with Children**

Age (Days)	Number of Cases	Percent	Cumulative Percent
0 - 30	33	70%	70%
31 - 60	13	28%	98%
61 - 90	1	2%	100%
over 90	0	0%	100%

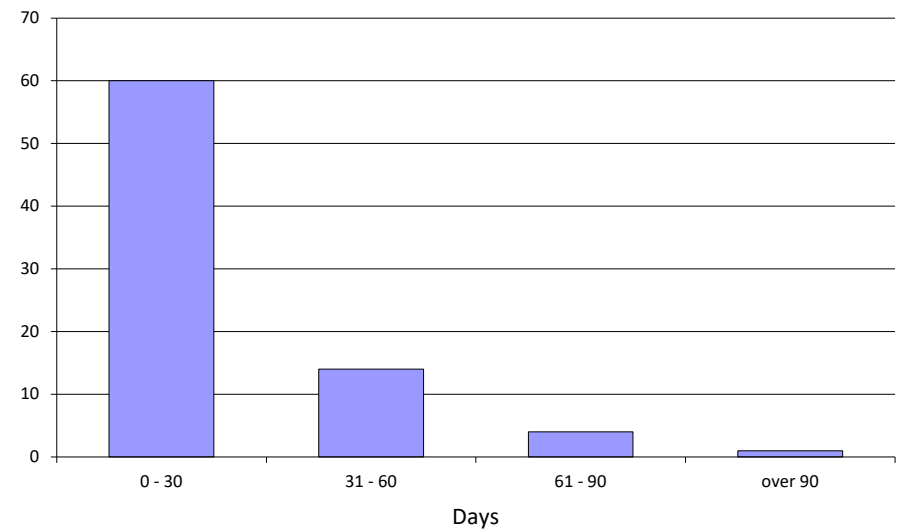
**Total 47**



**D - Marriage Dissolutions without Children**

Age (Days)	Number of Cases	Percent	Cumulative Percent
0 - 30	60	76%	76%
31 - 60	14	18%	94%
61 - 90	4	5%	99%
over 90	1	1%	100%

**Total 79**



Measure 4 **Age of Active Pending Caseloads**

**ALL JUDGES (12/31/2019)**

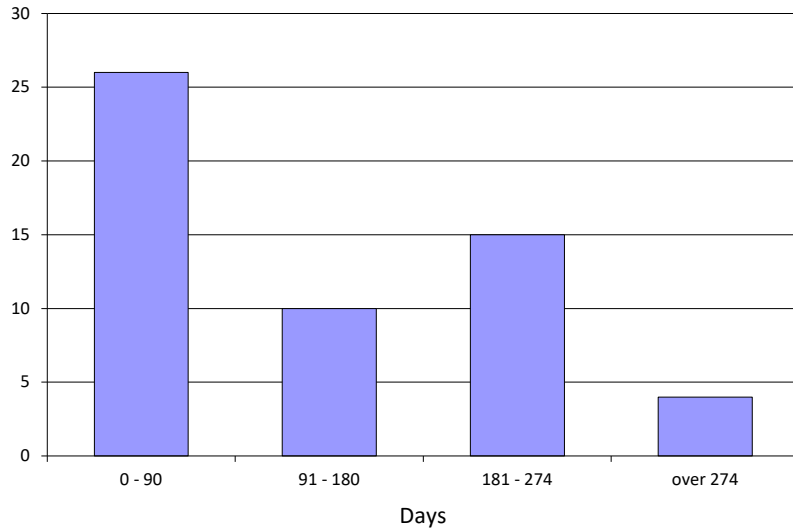


CourTools

**E - Change of Custody**

Age (Days)	Number of Cases	Percent	Cumulative Percent
0 - 90	26	47%	47%
91 - 180	10	18%	65%
181 - 274	15	27%	93%
over 274	4	7%	100%

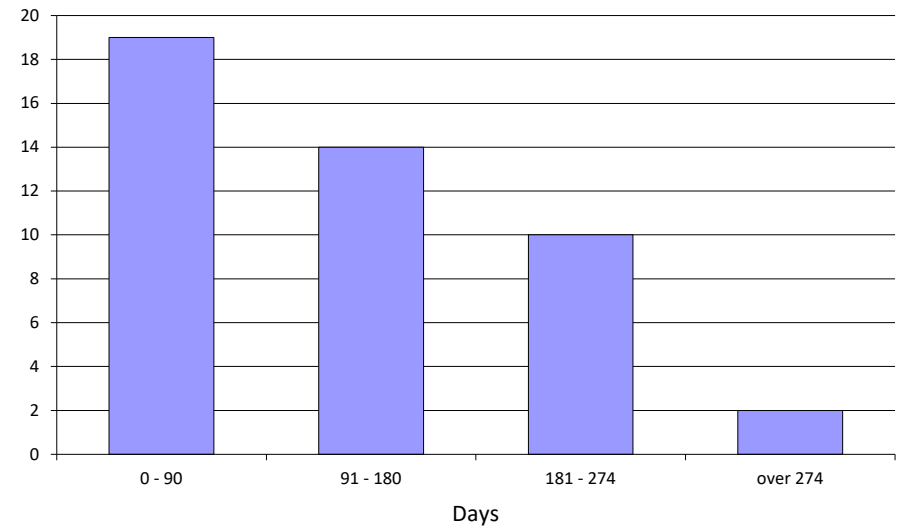
**Total 55**



**F - Visitation Enforcement or Modification**

Age (Days)	Number of Cases	Percent	Cumulative Percent
0 - 90	19	42%	42%
91 - 180	14	31%	73%
181 - 274	10	22%	96%
over 274	2	4%	100%

**Total 45**



Measure 4 Age of Active Pending Caseloads

ALL JUDGES (12/31/2019)

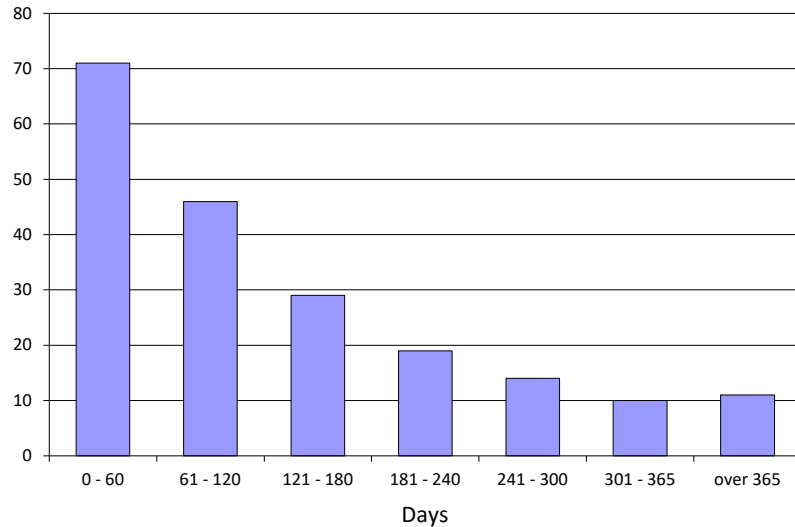


CourTools

G - Support Enforcement or Modification

Age (Days)	Number of Cases	Percent	Cumulative Percent
0 - 60	71	36%	36%
61 - 120	46	23%	59%
121 - 180	29	15%	73%
181 - 240	19	10%	83%
241 - 300	14	7%	90%
301 - 365	10	5%	95%
over 365	11	6%	100%

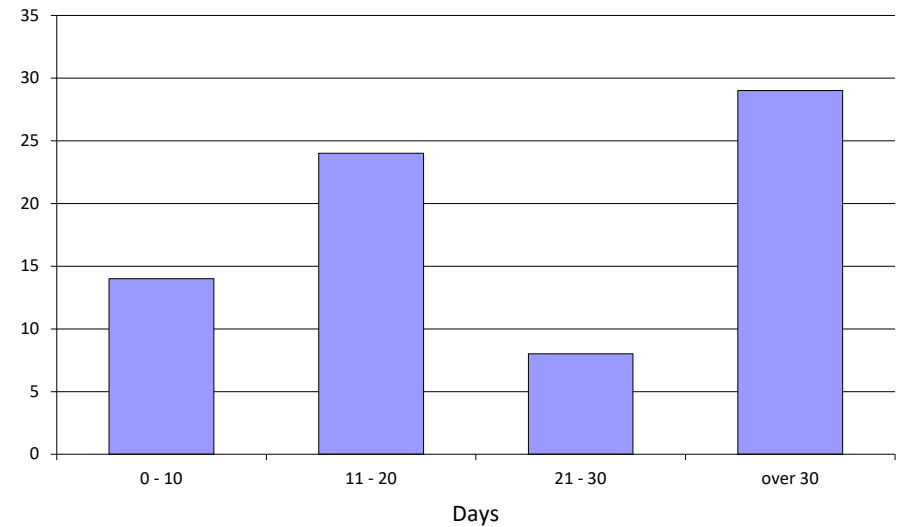
Total 200



H - Domestic Violence

Age (Days)	Number of Cases	Percent	Cumulative Percent
0 - 10	14	19%	19%
11 - 20	24	32%	51%
21 - 30	8	11%	61%
over 30	29	39%	100%

Total 75



Measure 4 **Age of Active Pending Caseloads**

**ALL JUDGES (12/31/2019)**

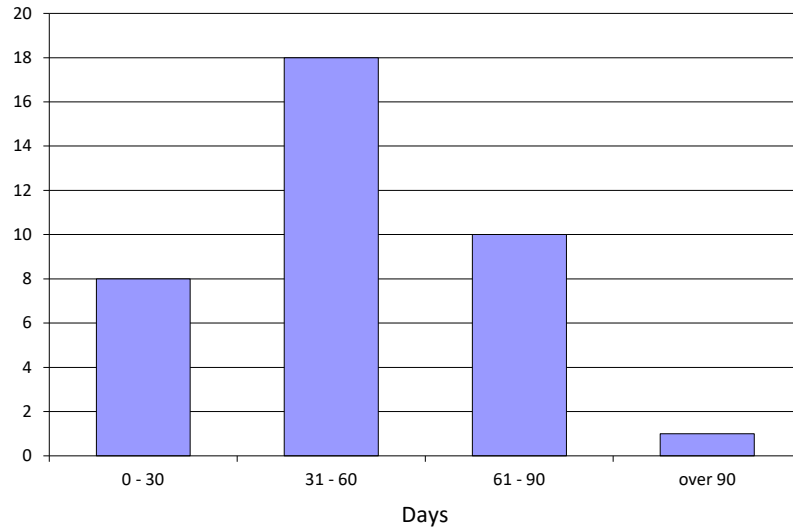


CourTools

**I - URESA**

Age (Days)	Number of Cases	Percent	Cumulative Percent
0 - 30	8	22%	22%
31 - 60	18	49%	70%
61 - 90	10	27%	97%
over 90	1	3%	100%

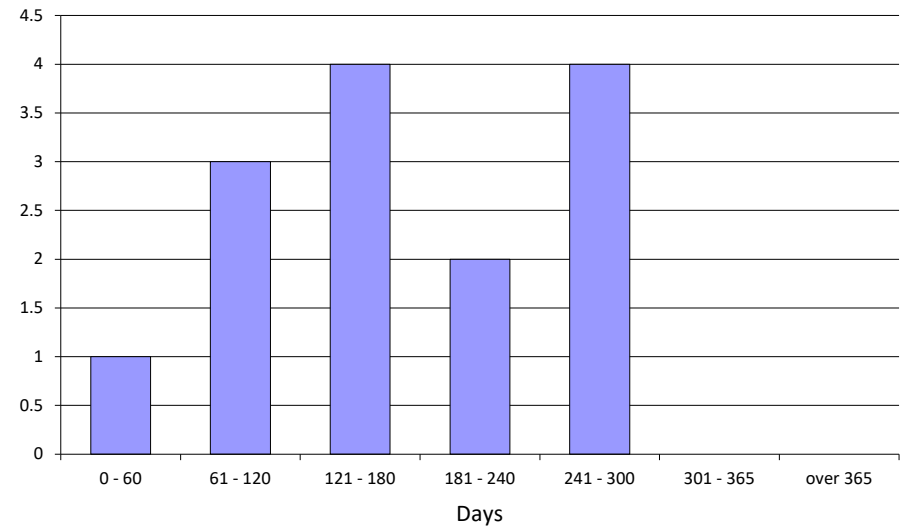
**Total 37**



**J - Parentage**

Age (Days)	Number of Cases	Percent	Cumulative Percent
0 - 60	1	7%	7%
61 - 120	3	21%	29%
121 - 180	4	29%	57%
181 - 240	2	14%	71%
241 - 300	4	29%	100%
301 - 365	0	0%	100%
over 365	0	0%	100%

**Total 14**



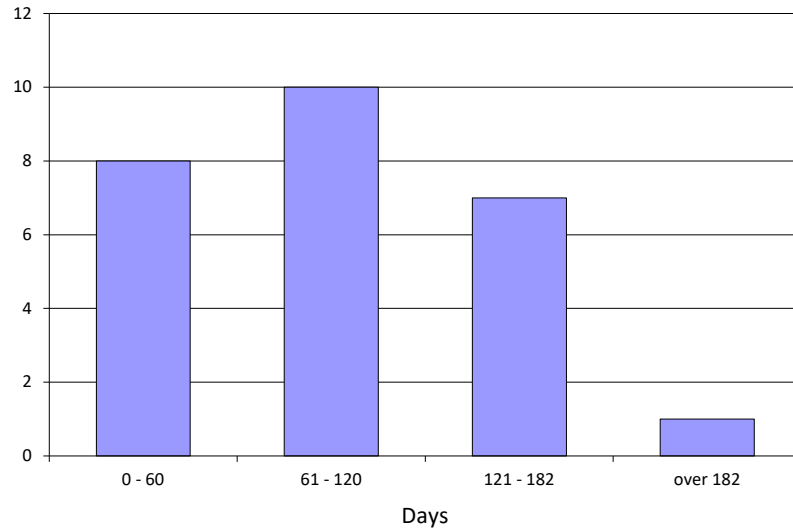
Measure 4 **Age of Active Pending Caseloads**

**ALL JUDGES (12/31/2019)**

**K - All Others**

Age (Days)	Number of Cases	Percent	Cumulative Percent
0 - 60	8	31%	31%
61 - 120	10	38%	69%
121 - 182	7	27%	96%
over 182	1	4%	100%

**Total 26**



**CourTools**

Measure 4 **Age of Active Pending Caseloads**

**ALL JUDGES (12/31/2019)**